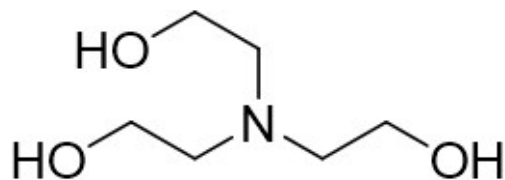


Berolamine 10 (BA-10)

Triethanolamine



Reaction mass of 2,2',2''-nitrilotriethanol and 2,2'-[[2-[(2-hydroxyethyl)amino]ethyl]imino]bisethanol and 2,2'-iminodiethanol. BA-10 contains a high level of triethanolamine and is mainly used as a grinding agent for cement to reduce energy consumption.

CAS number
102-71-6, 111-42-2,
60487-26-5

Molecular weight
150

Specifications

Appearance (MOA 200)	Light brown liquid
Diethanolamine (MOA 568)	≤ 30 wt%
Higher ethanolamines (MOA 568)	≤ 30 wt%
Monoethanolamine (MOA 568)	≤ 0.5 wt%
Triethanolamine (MOA 568)	≥ 50 wt%
Water (MOA 305)	≤ 0.5 wt%

Characteristics

Form	Viscous liquid
Color	Dark
Odor	Ammonical
Water solubility	Completely
Solubility in other solvents	Ethanol
pH, 5% solution	11
Melting point/freezing point, 1013 hPa	< 23 °C
Boiling point/boiling range, 1013 hPa	~ 336 °C
Flash point, 1013 hPa	179 °C
Ignition temperature	> 170 °C
Vapor pressure, 20°C	0.00009 hPa
Relative vapor density, air = 1.0	3.5
Density, 20°C	1120 kg/m ³
Relative density, 20°C	1.12
Partition coefficient, N-octanol/water, 25°C, log Pow	-1.0
Dynamic viscosity, 20°C	934 mPa.s

Notes:

Methods of Analysis (MOA) are available upon request. In case of dispute, the listed Method of Analysis will be used as reference methods.

All information concerning this product and/or suggestions for handling and use contained herein are offered in good faith and are believed to be reliable. Nouryon, however, makes no warranty as to accuracy and/or sufficiency of such information and/or suggestions, as to the product's merchantability or fitness for any particular purpose, or that any suggested use will not infringe any patent. Nouryon does not accept any liability whatsoever arising out of the use of or reliance on this information, or out of the use or the performance of the product. Nothing contained herein shall be construed as granting or extending any license under any patent. Customer must determine for himself, by preliminary tests or otherwise, the suitability of this product for his purposes. The information contained herein supersedes all previously issued information on the subject matter covered. The customer may forward, distribute, and/or photocopy this document only if unaltered and complete, including all of its headers and footers, and should refrain from any unauthorized use. Don't copy this document to a website.

Contact Us

GLOBAL
infoethy@nouryon.com

The Nouryon logo consists of a stylized orange 'N' followed by the word 'ouryon' in a lowercase, sans-serif font. The 'N' is significantly larger and more prominent than the rest of the text.